

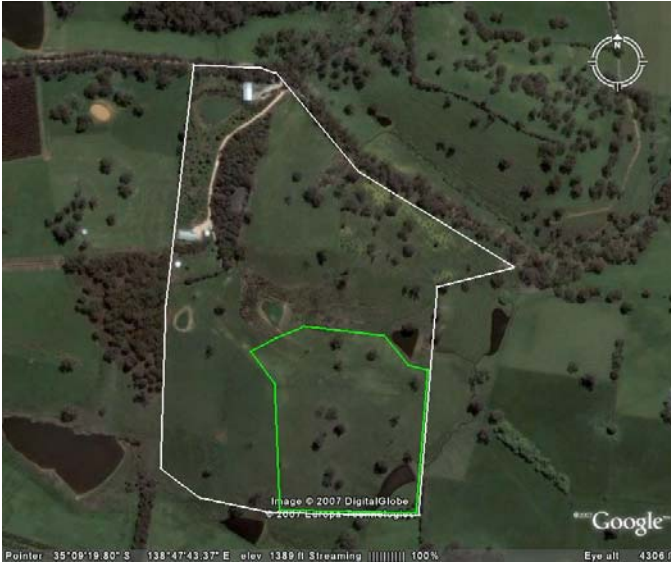
# Trees For Life

## Carbon Neutral Program

### Planting Site: 2007 - 2010

#### Flaxley, South Australia

Located 9 kilometres south-west of Mt Barker, South Australia, Carbon Neutral is creating a carbon sink on 20 hectares of this private landholding over four years.



The landholders began revegetation in 2001 and by 2006 had successfully revegetated 7.3 hectares. In 2007, 6.2 ha of this land in the Flaxley region was revegetated with a variety of species appropriate local provenance species. A further 6.5 ha has been revegetated in winter 2008.

Due to the steep nature of the land, a combination of hand and machine direct seeding and tubestock interplanting has been used

The species associations on site is dominated by *Eucalyptus obliqua* (Messmate stringy bark) woodland.

#### **Planting Dates:**

Direct Seeding undertaken over 6ha on 4 September 2007.



Looking west across the 2007 revegetation site. The brown circular patches indicate where hand direct seeding has taken place, the continuous lines is where the vehicle was able to seed the paddock.  
Photo taken on 11 November 2007

Hand Seeding undertaken on 19<sup>th</sup> September 2007



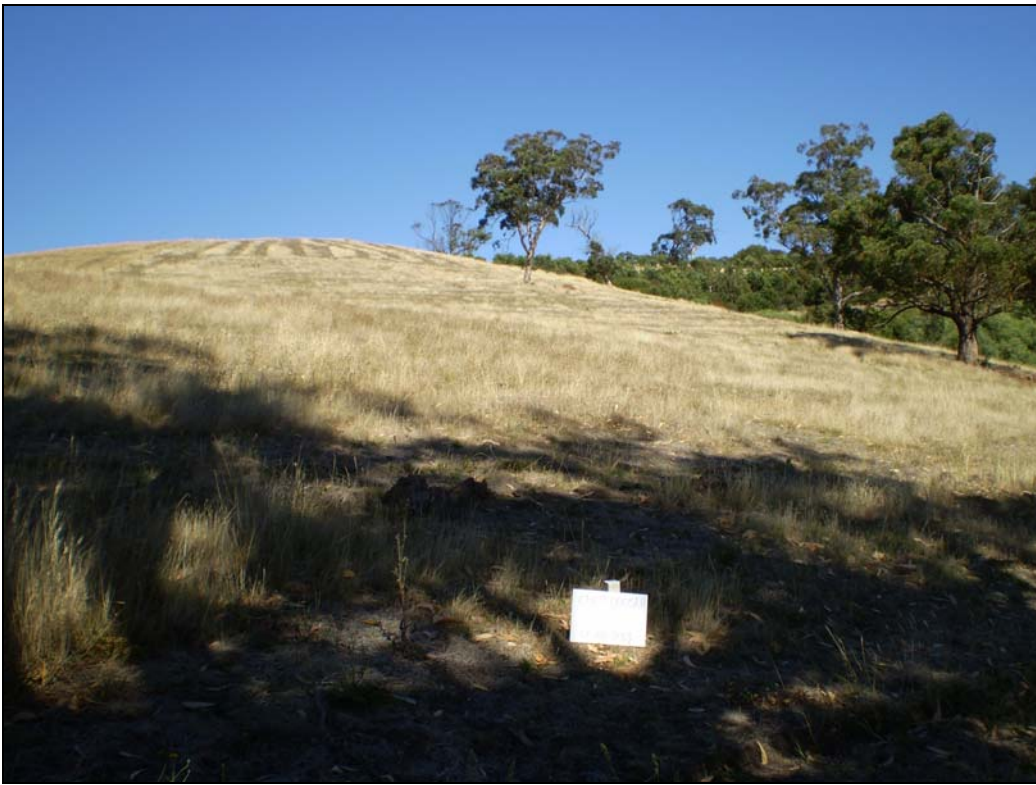
Preparing the soil for hand direct seeding.  
Photo taken on 11<sup>th</sup> November 2007



A well established row of seedlings.  
Photo taken on 5<sup>th</sup> March 2008



A well established *Eucalyptus camaldulensis*  
(River Red Gum)  
Photo taken on 5<sup>th</sup> March 2008



2007 revegetation area photographed Feb 1<sup>st</sup> 2008



2007 revegetation area photographed Fe 4<sup>th</sup> 2010

**Species planted on site:**

*Eucalyptus sp: camaldulensis, cosmophylla, fasciculosa, leucoxydon, obliqua, baxteri, viminalis, viminalis cygnetensis*

*Acacia sp melanoxydon, myrtifolia, paradoxa, pycnantha, acinacea, retinodes (hill form), verniciflua*

*Allocasuarina sp: verticillata, muelleriana, striata*

*Leptospermum sp: continentale, lanigerum*

*Callistemon sieberi*

*Dodonaea viscosa spatulata*

**Carbon uptake:**

The total carbon target for the 2007-9 plantings on this site is 4,167 tonnes CO<sub>2</sub>e sequestered over 100 years.

**Carbon Offset subscriptions status:**

2007 season planting fully subscribed by:

Elderton Winery, Finsbury Green Printing, Brown Falconer, Able Plastics, Aura Objects, Blacks Veterinary Services, Brown Brothers Pty Ltd, Complete Removals, Consistent Pork, Green Motor Company Pty Ltd, Jane Manifold Photography, Kearney Financial Services, Melrose Primary School, Metrotech, Orlando Wines, SA Great, Adelaide and Mt Lofty Natural Resources Management Board, Solar Cities Congress 2008, Sorensen Architects, Streamline Environmental Consultants, Taming the Beast, Tandem Graphic Design, Trees For Life, Two Dogs Media, G Russell, N Harry, P Hackworth, G Colombe, P Smith, G Paulik

2008 season subscriptions are now fully subscribed by:

Royal Automobile Association of SA Inc, Motor Accident Commission, Pernod Ricard Pacific, Satisfac Credit Union, Abbott Printers & Stationers and Shearer + Elliss Chartered Accountants

2009 season subscriptions are now fully subscribed by:

Elderton Wines, Motor Accident Commission, Whyalla Veterinary Clinic, Adelaide Convention Centre, Go For Green, Adventure Bay Charters, South Australian Wine Industry Environmental Conference 2009, Satisfac Direct Credit Union Limited, Marketing Naturally, Whyalla Veterinary Clinic, Barry Plant real estate, South Australian Tourism Industry Council, J Critchlow, A Platt