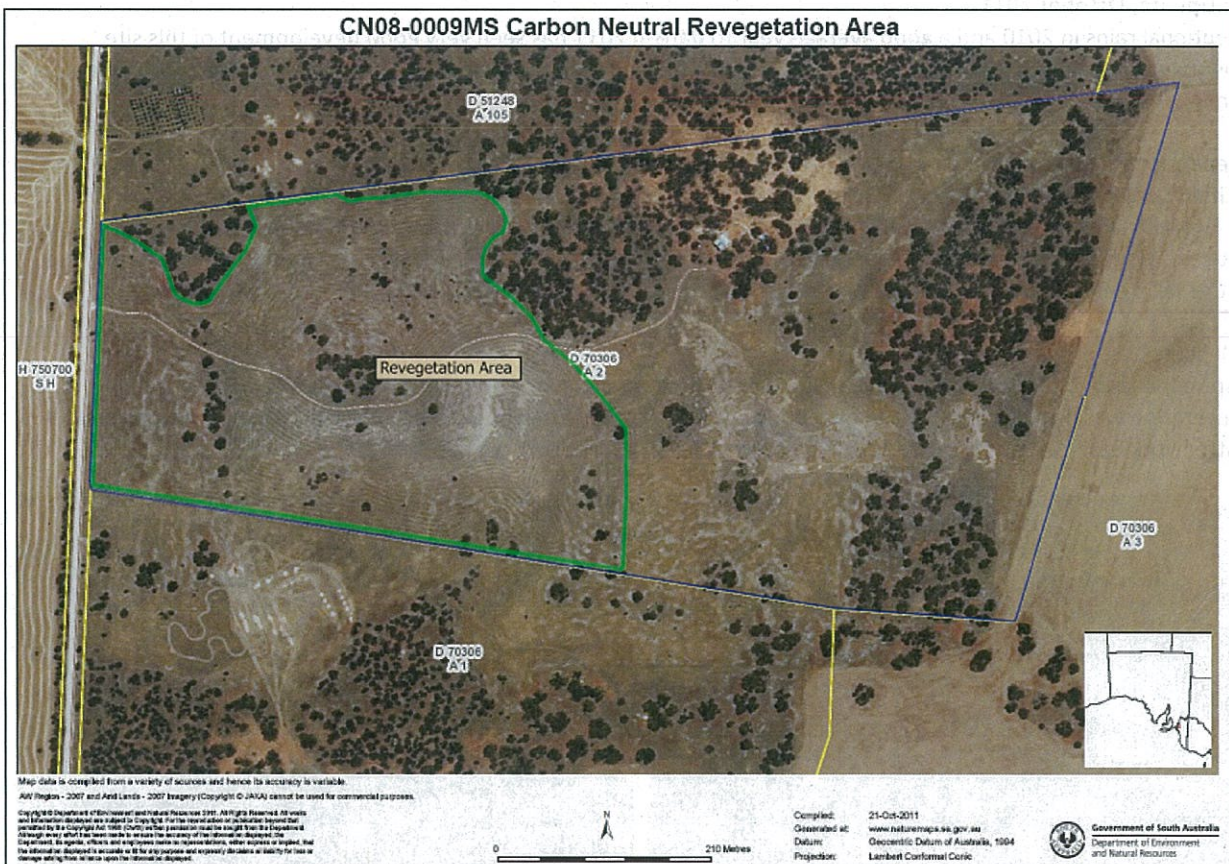


Carbon Neutral Program



Site 107	Moorlands, South Australia
Protection	100 years
Registered on Title	Yes, August 2008
Planted	23 rd July 2008
Method	Direct Seeding
Target	9,000 plants
First audit stem count	6,548 plants
Next Audit due	June 2012
Final Audit due	June 2013
Funded by	Extreme Machining Australia Pty Ltd, Whyalla Veterinary Clinic, Elderton Wines

Planting location on site:



Carbon Neutral Program



Site details

12 hectares of this 41 ha property were directly seeded in the Taillem Bend area in July 2008. The revegetation was undertaken using local indigenous species with direct seeding machinery. Once established, the species association will reflect the typical *Eucalyptus porosa* open mallee woodland of the area.

Species Planted on Site:

Acacia sp: brachybotra, hakeoides, microcarpa, pycnantha
Callitris sp: canescens, gracillis
Dodonaea viscosa ssp. cuneata
Eucalyptus sp: phenax, porosa, socialis
Melaleuca sp: acuminata, lanceolata
Pittosporum phylliraeoides
Rhagodia crassifolia
Senna artemisioides mixed species

Site Update, October 2011

Exceptional rains in 2010 and a good average year to date in 2011 has seen very good development of this site. Growth has been impressive after a very dry start in 2008, and numbers of visible plants has increased with new germination.

Independent audit undertaken in the second year - by Rural Solutions, March 2011

Verified Survival to date: 6,548

Survival rates for all the sites planted in 2008 are below target due to severe drought conditions in South Australia in that year. With direct seeding there is the possibility of further germination up to 5 years from seeding. However, to ensure we meet our target stems on this site we will conduct some remedial revegetation in 2012.

Infill plan:

Despite the landholder carrying out rabbit control on a yearly basis, one area on the northern side of the revegetation was particularly affected by rabbits entering from the neighbour's property. As the adjoining property control work has been done, this area will have remedial direct seeding over approximately 2.5ha in winter 2012.



Monitoring a salt affected area, photo taken 05-May-10



The same area 29-Jul-11

Carbon Neutral Program



GENERAL SITE PHOTOS OF REVEGETATION SITE



Next Site Update due April 2012

